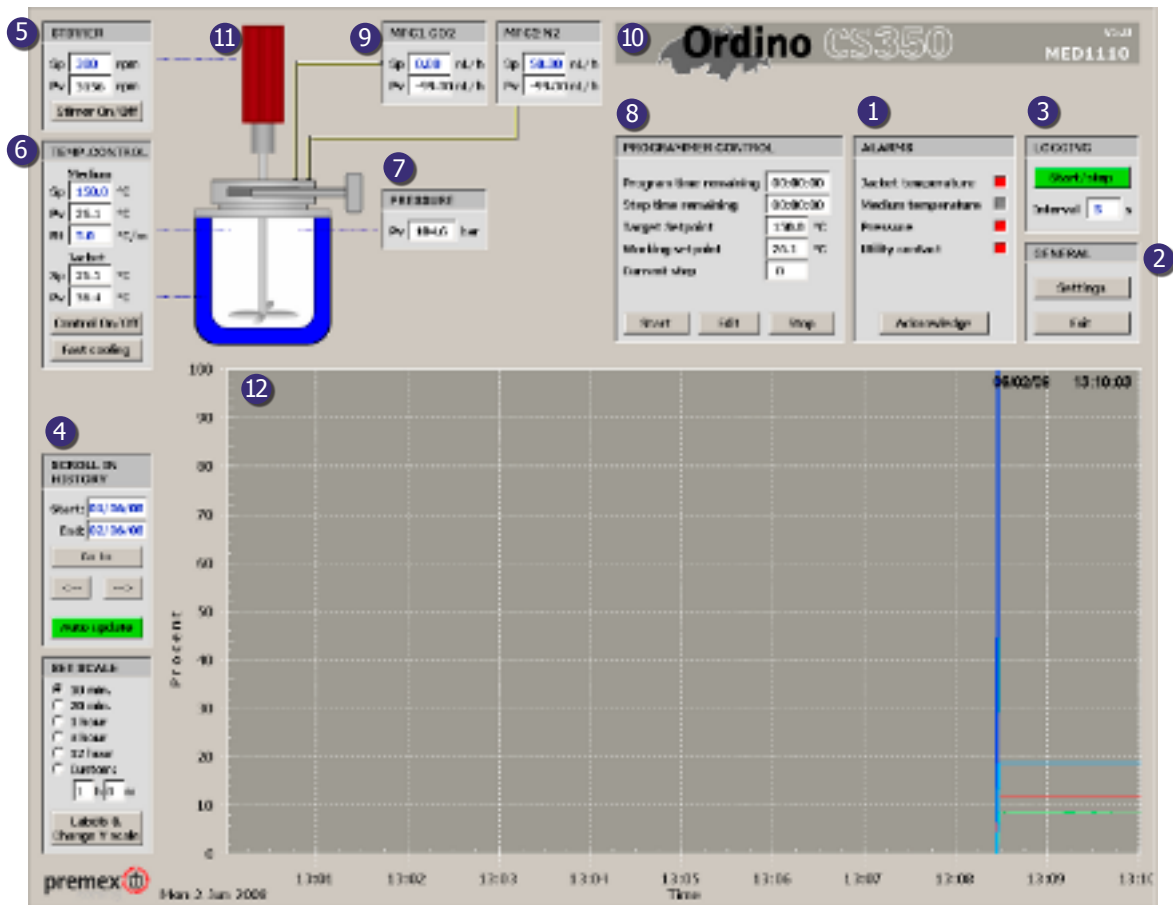


Control environment



The cabinets are connected to the computer. For the controls a specific operator environment is developed. In order to give you an idea of the look and feel of this environment, the main page is displayed.

For a more detailed description the user manual can be send at request.

No.	Element description
1	Alarms
2	General functions such as PID settings and alarm settings
3	Logging control (Optionally)
4	Trending control
5	Stirrer control
6	Temperature control
7	Pressure indicator (Optionally)
8	Temperature programmer (Optionally)
9	Mass flow controller (Optionally)
10	Banner with project related information